

A History of the Buderim Men's Shed

The First Ten Years



The first 10 years

Beginnings

We were not the first group to try to establish a Men's Shed in Buderim.

In 2008 Lois Kennedy from Interact Australia planned to set up a Men's Shed and Community Garden on a landfill site on Syd Lingard Drive between the cricket club and the bowls club. After much preparatory work including financial support from Buderim Lions Club it transpired that the Sunshine Coast Council would not allow a change of zoning from the existing "sporting/recreation". In October 2009 the project was abandoned.

In July 2010 the Buderim Rotary Club voted to sponsor a Men's Shed for the Buderim district. At around the same time Norm Thursby, on a caravanning holiday, decided to work towards setting up a Men's Shed when he returned home.

In August 2010 Norm approached the BWMCA with a view to sponsoring and providing seed funding for the establishment of a Men's Shed in Buderim. The BWMCA did not see it as their role but they facilitated a meeting between Rick Beasley of Buderim Rotary and Norm Thursby.

We all agreed to work together on establishing a Men's Shed in Buderim sponsored and initially funded by Rotary and so the Buderim men's Shed was born.

Early Steering Committee

A preliminary meeting was held at the Buderim Café on 17th September 2010 attended by Ray Mazoletti from Rotary, Lois Kennedy from Interact Australia and Norm Thursby.

The group used the Australian Men's Shed Association (AMSA) document 'Setting up a Men's Shed' to get started. We formed a steering committee and investigated the use of the Super Bee Complex on Tanawa Road as a Shed location. Even at this early stage locating a home for the Shed was a top priority.



An early Steering Committee meeting at 7 Grant Street

The first Steering Committee meeting was held at 7 Grant Street, Buderim on 28th September 2010 where the following were confirmed as members of the Steering Committee.

| | |
|---------------|---------------------|
| Rick Beasley | President |
| Ray Mazoletti | Deputy Chair |
| Norm Thursby | Project Coordinator |
| Lois Kennedy | Secretary |
| Graham Ensoll | Member |
| Terry Colless | Member |
| Roy Colless | Member |

The Committee decided to focus on the organisation and promotion of a public meeting to gauge interest. Throughout October there were regular Committee meetings including with the local State MP and Council member on the subject of finding a location for establishment of the Shed.

[First Public Meeting](#)

This was held on Tuesday, 26th October at St. Marks Hall in Buderim and was attended by 50 people. This overwhelming level of interest encouraged the Steering Committee to plan further public meetings and convinced them that the project had a future in Buderim.



The public meeting in December 2010 filled St. Marks Hall

The next public meeting was held again at St. Marks Hall on the 13th December with a sausage sizzle to follow – a tradition that has continued down the years.

2011

Further public meetings were held on:

Tuesday, 18th January 2011 at Graham Ensoll's shed in Kunda Park.

Tuesday, 15th February 2011 at St. Marks Hall subject "Men's Health" - speaker Dr Denis Campbell

Tuesday, 15th March 2011 at St. Marks Hall Subject "Investment Strategies" - speaker Ralph Ding

Tuesday, 19th April 2011 at St. Marks Hall -speakers Hayden Kenny and Greg Doggett , Council's Head Gardener, Buderim

Tuesday 17th May 2011 at St. Marks Hall - Members "Show and Tell"

By May 2011 we had 119 members register interest.

During December Lois Kennedy resigned as Secretary to be succeeded by Len Bidstrup. A number of Rotary Club members were co-opted on to the Steering Committee

Jon Nott

Mike Toone

Ken Grant

Ted McLean

The Search for Land

Even before the Steering Committee was established, Buderim Rotary was investigating the "Super Bee Complex" as a possible site for the Shed. It seemed ideal with a number of buildings, ample parking and plenty of space. It would have required a lot of work to make it suitable for the Shed, but given the right location, that was not a problem. In the end the owner would only offer a 6 month lease and that lack of security of tenure killed it for us.

It is interesting to note that the Super Bee Complex has been vacant for the full 10 years of our existence

With the help of Council and our State MP we considered land all over Buderim.

Parkland next to the Gem Club on Syd Lingard Drive

Sporting Complex land at Ballinger Road

Vandy's 'Old' Garage Shed

Girl Guides Building Lower Level

Council Depot Sheds in Wises Road

All of these suggestions and many others were considered and rejected mainly on the grounds of size and security of tenure. Every month our membership was growing and so we had to plan for numbers much bigger than our membership at the time.

Council asked for a Business Plan to be prepared and indicated that the inclusion of a Community Garden with our Shed proposal would improve the chances of a favourable decision. Privately we considered the two projects to be 'stand alone' with somewhat different objectives, but went along with the suggestion for obvious reasons.

The Move to 53 Mill Road

In early April 2011 there was a chance encounter between Simon Whittle and Cherie Brazier en route to a funeral in Kingaroy. Simon is a well known Buderim resident and Cherie looked after Dr Bill Glasson's interests in Buderim.

After some quick negotiations, it was agreed on a handshake that we would occupy the building at 53 Mill Road, which had been vacant for some considerable time, at no rent. We moved in on the 31st May 2011 to start cleaning up and setting up our equipment.



Dr Bill Glasson and Professor Claire Jackson at Mill Road in early May 2011

The first General Meeting at Mill Road was held on the 14th June when a wide range of activities were discussed mainly around lay-out of work areas, development of workplace health and safety procedures, recruitment of Team Leaders for the different activities and the administrative issues involved in registering our Men's Shed.



Preparing the site for occupancy – inside and out

At this time we included “Community Garden” in our title, mainly at the insistence of the Sunshine Coast Council. We certainly had the room and an active Garden Group but really did not think that operating a Community Garden alongside a Men’s Shed would work long term.



Preparing the garden beds for vegetable production

The Shed was open to Members one day per week and an attendance fee of \$5 was set to offset power consumables and provision of tea and coffee etc.

August

Our membership was now approximately 100 and we were overcrowded on the one day we were open so it was decided to add Thursday to our regular opening days. However we were now having difficulty in recruiting enough Team Leaders to effectively run the second day. Work continued on OH&S procedures and competency assessments for all members working with equipment.

An official opening event was held on August 6th with attendance by local Councillors, State Member Steve Dickson, Dr Bill Glasson and Prof. Clair Jackson.



Grand Opening August 6th 2011

September

We decided it was time to incorporate the Buderim Men's Shed and therefore we had to formally elect a President, Secretary and Treasurer, and a number of Committee Members at an EGM on 18th October.

During September we received our first grant from the Buderim Foundation of \$4000 for a metal forming Machine. The Committee continued to investigate any possible permanent home for our Shed particularly at Ballinger Park.

October

An EGM elected Rick Beasley as President, Len Bidstrup as Secretary and Eric Angus as Treasurer with a small committee of five members, and authorised the Secretary to proceed with the incorporation of the Buderim Men's Shed as a not-for-profit association.

The Ballinger Park option has been complicated with ownership and leasing disputes and now seems unlikely as a long term solution. We conducted our first Bunnings sausage sizzle, raising \$1400 profit for the Shed.

November

Buderim Men's Shed was now incorporated with ABN and Tax File number. During this month the following activities were added:

Library up and running

Photography group proposed

Discussion group - later called Yakety-Yak

Music group formed

Wood Turning group formed

Toy Makers group from Caloundra joined our Shed.

Membership continued to grow, and it became obvious that we needed time to establish the infrastructure to manage the influx of members and the demand for new activities.

2012

January

This was membership renewal time for existing members. Fees were \$35 for the year (\$10 membership, \$10 building fund and \$15 insurance). It was decided to suspend new members for a period of time and create a waiting list, to allow us to recruit additional Team Leaders and reorganise the layout of available space. We were now open three days per week. The Computer group's activities were expanded and an Art group commenced in the house.

February

The Sunshine Coast Council was approached to assist with location of a suitable site for our permanent home, however their response was not encouraging. The Glassons paid us a visit and were most impressed with the changes we had made and on the maintenance of the grounds.

We received a \$5000 grant from Telstra to conduct training courses for Seniors, of both genders, in the use of Mobile Phones. This took place over the next few weeks and was very well supported by the Buderim community. Barry Cheales was busy preparing grants and producing our first newsletter.

March

Membership now stood at 164 with 27 of those not renewing membership for 2012 and 27 on the waiting list. This began a pattern that continued over the years where between 10% to 20% of the previous years' members did not renew but were replaced by at least the same number of new members. Activities at the Shed continued to grow with the addition of Leatherwork and Lead-lighting, and the expansion of Woodturning to two days per week. A book group was established by Bill Duffield.

A presentation by Connect Hearing signalled the start of regular guest speaker appearances at our monthly General Meetings. These were mainly to do with men's health issues with some covering investments and retirement living options.

Fundraising was assisted by a Bunnings BBQ and a golf day at headland Golf Club. Club shirts and caps were now available for sale.

April – May

With membership (including the waiting list) approaching 200, we were having some success in recruiting new and deputy Team Leaders for Shed activities. The key points from this very busy period were:

A proposal to build a double garage behind the house to accommodate the gardeners' equipment and allow Metalwork to move into the ground floor of the house. This required Council approval.

Council funding for the training of 15 people in First Aid and CPR.

A sub-committee headed by Ross Winks to organise an "Open Day" on August 26th 2012. This was planned to be a major public event, with items for sale and demonstrations of Shed activities.

Volunteers needed for a Hot Dog Stall to be held at the Nambour Show in June.

Work commenced on establishing a Shed web-site

Beefy's Pies made available for purchase at the shed kitchen proved popular for lunch.

June

Membership was reopened and was now in excess of 200 with the Shed hosting activities on four days per week. We continued to have proposals for new groups some of which never took off, for example: Orchids and Bonsai Group and Card Group.

There was still a major effort being put into locating a permanent home for the Shed. We were receiving a little help from Council, and were realising that finding land in Buderim, at a reasonable price was a remote possibility. This was emphasised by a couple of Real Estate inspections of 53 Mill Road. However Dr Glasson and Prof. Jackson assured us that nothing would happen in the near future.

August

The first public Open Day was held on 26th August with Ross Winks in charge of the organisation. A big effort was put into promotion within the Buderim Community. We were providing a Coffee Van, food with the assistance of the Friends of Buderim and music by local school bands. We provided items for sale and a raffle.



On the day, the event was attended by the Sunshine Coast Mayor and councillors, Federal and State politicians and hundreds of Buderim residents. A total of \$5,800 profit was made. There is no doubt that this single event put us on the map as a community group and generated goodwill that has carried through to the present day.



A selection of some of the displays for Open Day

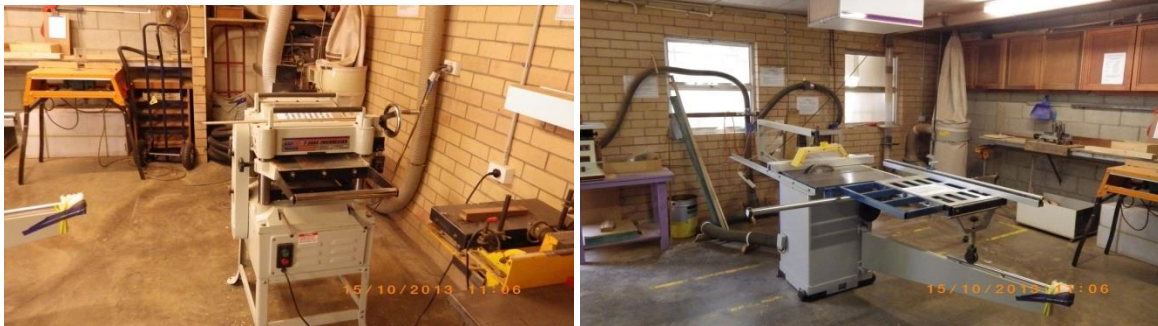
September

Our membership was growing steadily and was now around 250. Interestingly 43 of those had no access to email. Over the years we have reduced that number to seven through in-house training and education. We were now open five days per week. Our stock of high quality equipment was growing thanks to the grant applications to Buderim Foundation, The Community Gambling Fund and the local Council prepared by Barry Cheales.

The Gardeners moved into their new shed and we started a kerbside numbering project in conjunction with Buderim Rotary

After the first two frantic years, we had now settled down into a routine where the Committee was dealing with the day-to-day issues of a large community organisation.

By November the Metalwork Group had moved into the house giving the Woodwork Groups additional space for the increasing number of woodworking machines.



The Planer and Table Saw from a Buderim Foundation Grant

2013

This was a very successful year for the Buderim Men's Shed with major improvements to the Mill Road site and the establishment of our core Workplace Health and Safety policies and protocols. Individual competency assessments were introduced for all areas using hazardous equipment. This was based on the safe operating procedures listed in the AMSA Shed guidelines.

Our quest for a permanent home continued, and a Business Case was prepared in support of our request to Council to assist in locating a suitable site. We were offered an industrial site in the Kunda Park estate, however it was deemed unsuitable due to its small size, the presence of a sewerage easement and the requirement for an area to be reserved as parkland. It was clear that Council had little understanding of the needs of a Men's Shed of our size and complexity.

Independently we had identified a parcel of land surrounding an old quarry site in Kiluin which was State Government land administered by Dept. of Transport and Main Roads (TMR). With the assistance of Cindi Coinix from Sunshine Coast Council and Steve Dickson, our local State MP, we had initial discussions with Ian Sturdy from TMR regarding a portion of that land fronting Advance Road.

Over the year we received \$45,000 in grants and donations which was an outstanding achievement and made a huge difference to our plant and equipment register.

At our Open Day in November the Bendigo Bank presented the Shed with a Van and Trailer to the value of \$15,000.



Peter McDonnell and John Burgess presenting the Van and Trailer from Bendigo Bank

At the same event our local State MP Steve Dickson announced that TMR had agreed to grant the Buderim Men's Shed a lease over a portion of the quarry land with the details of exact location, size of lease area and lease details to be negotiated in the coming months.



Steve Dickson announces our prospective new home

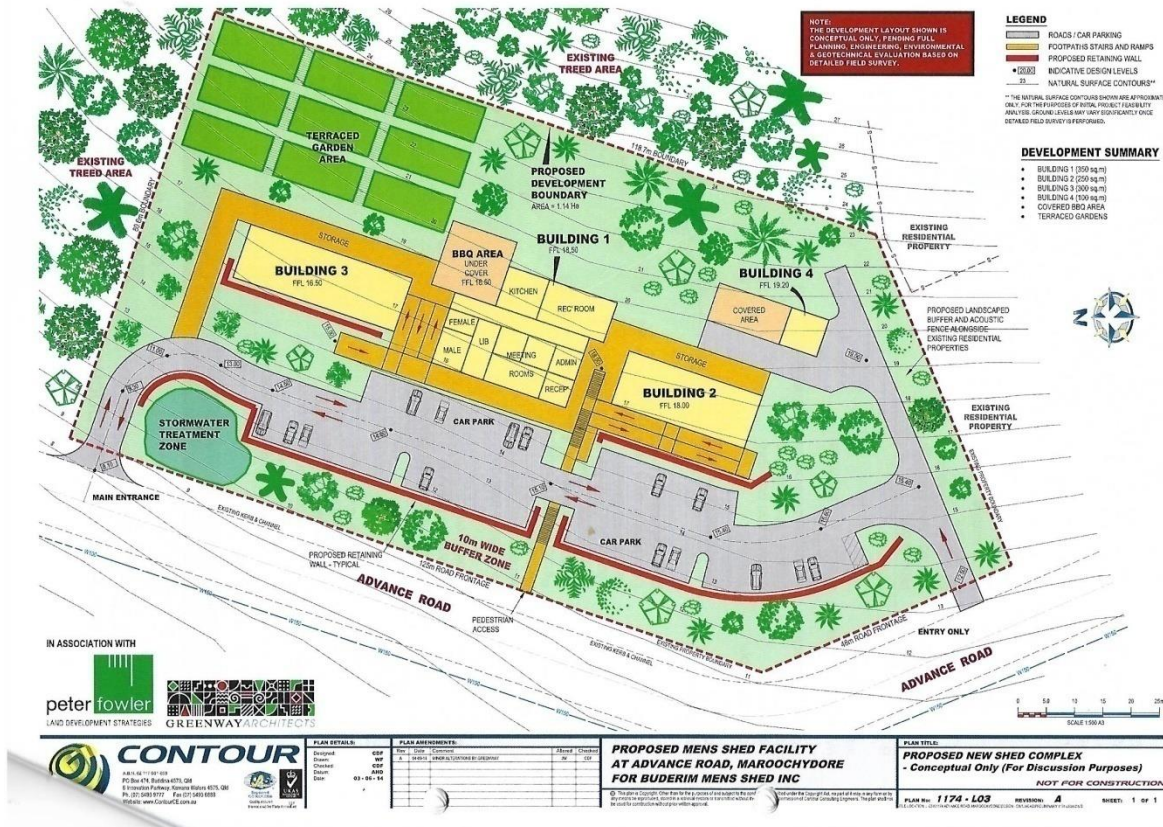
2014

During the early months discussions progressed with TMR regarding the actual location of the land to be made available to Buderim Men's Shed, however things became bogged down in minor disagreements over area, boundaries etc. In the meantime the Management of Maroochy Men's Shed became very upset at the prospect of Buderim being given land in what they considered was their backyard. Relations became quite strained resulting in a meeting at Steve Dickson's office where we raised the idea of amalgamation of the two Sheds – an idea that was rejected in the strongest possible terms by Maroochy.

Motivated by the knowledge that we had a permanent home for the future, we began to research the long and involved process of gaining Council Approvals for the development. We were greatly assisted by Peter Fowler of Land Development Strategies who worked with us throughout the next four years of the project assisted by Contour Engineers and Greenway Architects. In the first few months of 2014 we drew up concept plans, conducted soil testing, held pre-lodgement meetings

with Council and prepared a paper in support of a request for Ministerial Designation of the land at Kuluin.

The plan below was produced in June 2014 and as you can see bears no similarity to the final layout. The site presented a number of problems to do with the natural slope and the Council’s requirements for the gradient of car park driveways. Our original idea was to build on natural ground with the buildings on stumps and having a timber floor. Only when we were in discussions with Shadforths, our earthmoving contractor that we were convinced that slab on ground was the way to go.



In June 2014 Steve Dickson called a site meeting with TMR and Buderim Men’s Shed representatives to thrash out remaining differences regarding our proposed site. (Steve had been dealing with the TMR Director General but it was suspected that the Property Group within TMR was unhappy with the arrangement). This was a crucial meeting at the conclusion of which the TMR people were instructed to “get on with issuing the lease”. The next few months were devoted to the lease document negotiations but finally on 13th November we signed a lease with TMR for 1.136 ha of land for 30 years with two further options of 30 years each. The commencement of the lease was 22nd April 2015.



The site prior to any clearing

In July we commenced planning of the “Light Horse Project” funded as part of the ANZAC centenary events. We regarded this project as a major community involvement and addressing one of our core objectives of community engagement.

2015

A Relocation Committee was formed comprising Peter Fowler, Ross Winks and Norm Thursby. Over the next two years plans were constantly reviewed and modified. The first task was to register our lease area (Lot 1) from the larger parcel of land with the relevant authorities, and this took about six months. The process of obtaining Development Approval (DA) from Council was commenced, also discussions with Energex, Telstra and Unity Water regarding the provision of services to the site. None of these activities were simple and certainly not quick and fully occupied the Committee for the next two years. By the end of 2015 water was connected to the site, a power pole had been erected and Telstra had allocated a phone line for later installation.

Meanwhile back at Mill Road our membership was approaching 300 and every day was busy.



Outdoor eating area – an important Shed resource

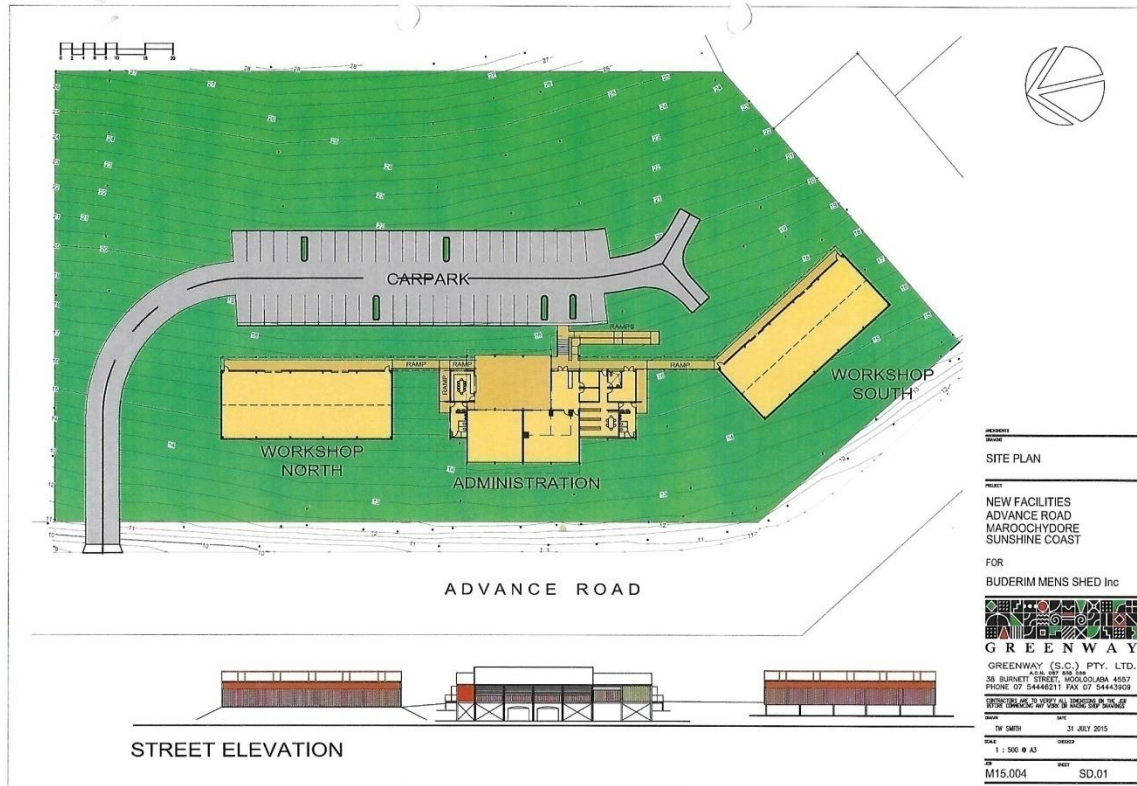
The members worked hard on excavating, paving and building retaining walls for this important addition to the Shed resources.

In October 2015 the Light Horse Memorial was unveiled at Woombye.



A Fundraising Committee was formed in December with the aim of raising \$1million over 5 years – by now we felt that nothing was impossible. We agreed to vacate the Mill Road premises by 31st December 2022 at the latest.

By the end of 2015 our concept plan was more like the final layout, however we were still planning to build on natural ground with two buildings elevated on stumps and one on slab on ground. The car park would have a fair slope on the hillside.



2016

While the Shed activities at Mill Road were powering along, a new group commenced operation, and grew to be the most popular single activity of all. This was an early morning exercise group which met three days (Monday, Wednesday, and Friday) between 6.00 am and 7.30am. Because of restricted space the equipment had to be set up and stored away after each session. The exercise program was designed specifically for older men by Craig Allingham our member who was also a Physiotherapist.

At the new site, after heavy rain we had a problem with storm water run-off from up-hill of our area down an old fire trail. We entered discussions with TMR on the issue but it still took two years to finally solve the problem. Applications to Council were discussed with some changes made that required a Negotiated Decision which delays the time when construction can start.

We entered serious discussions with Shadforth's to carry out the earthworks on the site. They strongly advised us to consider building slab on ground for all buildings and to have the car park on level ground. This required producing a new set of layout drawings and a re-application to Council for Operational Works approval – another delay. By mid year we had accepted Shadforth's quote

which included a \$170,000 discount as a donation in kind. This was an unexpected and very generous offer.

Our Fundraising Committee, comprising John Hobbs, Bill Duffield, Rob Horne, Don House, Paul Boman, Barry Cheales, Rick Beasley and Norm Thursby got started with the serious business of raising funds. The first action was to set up a Members' Donation initiative with the aim of raising \$100,000 over a five year period. Our initial plan was to build the new shed over a five year period.

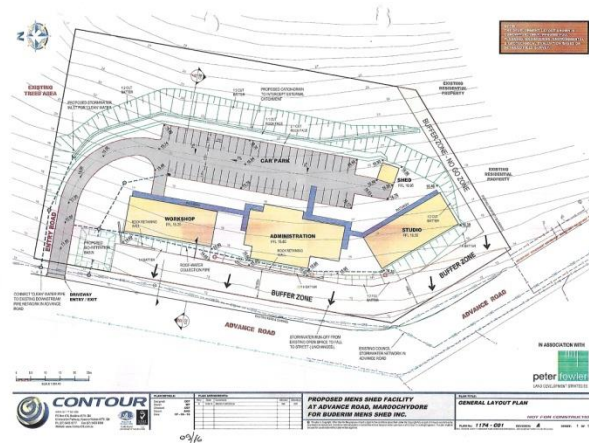
This is covered in detail in Appendix 3 – 2016 Business Plan. The response from Members was very encouraging with donations ranging from \$5 or \$10 dollars a week up to one off donations of some thousands of dollars.

In September the Committee held a major fundraising event in the form of a Family Fun Day at the Mill Road property with egg and spoon race, sack race, ball through hole, stilt walking and many others all supervised by Super Shedman.



Some of the action from the Family Fun Day

The day was a great success with the Mayor and local State MP in attendance.



By September we had settled on the final layout plan for the new Shed site

We were on the lookout for a source of major funding and had identified the Building Better Regions Fund (BBRF) as a likely target. However it had been dormant for some time although their web-site said there would be a future round of grants. Throughout the year we checked with the web-site every week and finally in December the BBRF opened for a new round of Grants. Barry Cheales and Norm Thursby started preparing the application which took two months of work.

2017

In January we received Development Approval from the Sunshine Coast Council and commenced work on preparation of the application for Operational Works approval. That was eventually granted in July so now work could start any time. However it would not be until late in the year that work really got going on the site.

Meantime every activity at the Shed was focussed on fund raising. We held a very successful Garage Sale in addition to our regular Open Day, combined with the occasional Bunnings BBQ the building fund was growing steadily.

We submitted the BBRF application in February requesting a \$500,000 grant which we would have to match dollar for dollar. This put the pressure squarely on the Fundraising Committee. We also opened discussions with Bendigo Bank about the possibility of a loan if needed. Meanwhile we awaited the decision on our application. In July 2017 we were advised that our application for a half million dollar grant was successful and this changed everything. We were now able to contract our five year development plan to two years, with two buildings going up in stage 1 and the final building the following year.

In October, Shadforths started land clearing and in November we held a Sod Turning event with all local politicians and councillors present



All felled timber was mulched

A wildlife spotter was on site during this operation with one lizard and two mammals relocated and no injuries to any wildlife during the operation.





Sod Turning Official and Unofficial



Site cleared and ready to go

2018

The earthworks should have taken approximately 12 weeks, however the start of work coincided with a period of wet weather which caused considerable delays. It was not constantly wet but one day's rain caused a one to two week delay while the ground dried out enough to allow the trucks access. Then another day's rain would cause a further delay. In addition we did have a period of intense wet weather which caused land-slips to occur on the excavated bank

Ross Winks, Doug Forsyth and Norm Thursby were all licensed to be the onsite representatives of the Shed, during earthworks and building construction no other Shed Members were allowed on site. Finally in August the site was ready to hand over to Evans built to commence the building work.



Site ready for handover to the builder

During August we received some information that once again changed everything. Steve Dickson who was no longer the local State Member, but was associated with Pauline Hanson's One Nation Party announced that they (One Nation) had secured \$500,000 for Buderim Men's Shed from the Community Development Grants (CDG). There were no restrictions to this grant, no need for matching funds and a very simple application process. Within a few days we had a signed contract and this solved our challenge of matching funds for the BBRF grant. It also presented us with the opportunity of completing our project and constructing all three buildings at the one time. Evansbuilt very quickly revised their quote and by September we were all good to go. Since the site was level and the buildings were steel frame construction and manufactured off site things happened very quickly. From a start in September, by Christmas the project was nearly complete.



By December 2018 all three buildings were in final fit out

The car park still had to be completed and some internal finishing to the buildings but by the end of December we were almost there. We had caught Evansbuilt in a quiet period so they were able to devote a lot of resources to our project and make up all the time we lost due to wet weather earlier in the year.

Meanwhile we had started the re-vegetation work required by Council not only at our site but also at Ringtail Park in Bli Bli where we worked with the local community to rehabilitate a degraded parkland area.

Back at Mill Road planning was under way for the move to the new Shed, which was going to be a major operation.

2019

The handover from EvansBuilt was in February and this was the first time that Shed Members could visit the site and have a good look round.



Just after hand over we now had full access

In January we had a rain event that caused considerable erosion on the rock bank below the concrete drain. We had been advised that this rock was solid and self supporting however this was not the case and we had a lot of wash-out onto the carpark. The engineering solution was to shotcrete the entire bank below the concrete drain at an unexpected additional cost of \$40,000. This can be seen as the white band just above the carpark.

As you can see from the photos below the buildings were empty shells. The first priority was electrical installation of lighting and power distribution points. A team of our own Electricians with some outside support took a couple of months to complete this task. Meanwhile Ross Winks led discussions with the Shed Coordinators and Team Leaders about equipment layout, work flows, walkways etc. In the case of the Workshop getting consensus was like trying to herd cats.



The workshop and meeting room at hand over

We were able to source a plentiful supply of particle board sheets at no charge. These were used to line the bottom couple of meters of the walls. This greatly improved the look of the buildings and provided a solid base for future racking of tools etc.

This was a period of intense activity both at Mill Road and at Advance Road and in all the catalogue of the great work that was done, we must mention the set of new woodworking benches built by Ron Peick and his crew.

We decided to hold the Grand Opening early rather than wait until the Shed was fully operational. Invitations were extended to the many individuals and organisations that had supported us during the construction of the new Shed. The Opening Event was held on 30th April 2019.





With the formality of the Opening behind us we could concentrate on the completion of the fit out of the new buildings and progressively move our activities from Mill Road. For a few months we were a split shed but by December we had completed the move and were cleaning up the Mill Road property prior to handing back to Bill Glasson and Claire Jackson.

Other activities at this time centred around the landscaping of the site where we planted over 4000 trees and shrubs and the re-vegetation project at Bli Bli as part of our commitment to the Sunshine Coast Council.

Because of the relative isolation of the site in Advance Road, we beefed up our security with it being fully fenced and gated and the addition of CCTV covering the property.

We also made full use of any available grant opportunities to help provide the infrastructure needed for a completely new building.

2020

The most significant event for us in this year was the effect of the COVID pandemic on Shed operations. We were shut down for a three month period, from mid March to mid June. During this time Committee meetings were conducted using ZOOM. When we reopened we were limited to a total of 20 people on site. This made scheduling of all our various activities very difficult. Fortunately this only lasted a few weeks then we were allowed 100 on site based on floor area. When the kitchen and eating area reopened we ran it as a cafe and had strict limits on numbers at each table. We implemented strict COVID protocols for social distancing, equipment sanitising, mask wearing and cash handling. This prompted the introduction of a yearly payment of attendance fees and the establishment of an EFTPOS machine from Bendigo Bank. The Shed members handled the changes very well although attendance at the shed remained lower than before the shut down for most of 2020.

Work continued on improvement to the infrastructure with the installation of air-conditioning to the office/administration area and heat removal fans in the Workshop.

The output from Shed activities increased in 2020 due to increased requests from individuals and community groups as well as demand from our own Shed Shop. The members did a great job, but eventually we had to become quite selective about the volume of work we accepted to allow things to stabilise.

During the year we developed a protocol for accepting men with a disability into the Shed community. This was necessary due to the increasing requests from Service Providers to accept their

clients, some with carers, without them fully understanding how the shed works. By the end of the year we had accepted a number of disabled members based on one per activity area per day.

2020 was indeed an unusual year and forced upon us some changes that will no doubt remain in place for some time to come. At least after 10 years we had the security of our own premises and a long term lease.

The Shed Shop Story

Ray White Real Estate, who have been a strong supporter of the Shed moved to new premises in Buderim in early 2017 and very kindly offered their old place to Buderim Men's Shed for the remainder of its lease. We initially saw this as an information and community building opportunity. We had some of our product in the shop as a display but soon had offers to purchase. This prompted the idea of a Shop selling the product of Shed activities. The lease on the Ray White shop ran out in August and we had to move out but Rob Horne who was a Ray White Agent and a Shed member soon found us a vacant shop in The Hub which we occupied from September 2017 to August 2018. When it was leased we moved again to a shop in the Buderim Mall which we occupied until February 2021. Our current location in Buderim Marketplace which we moved into in April 2021 is the best position we have had. At all of these venues we have paid little or no rent, on the understanding that when it is leased we move out.

Over this period Richard Webb and Fergus O'Hara with their crew of helpers have built the Shed Shop from occasional sales to a major contributor to Shed income.

2021

To be continued.....